

ALLEY



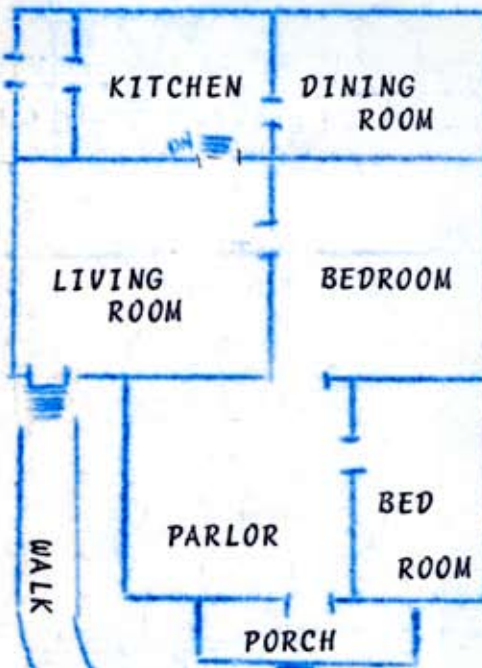
PATH

GRANDMA'S

GARDEN

WELL

WALKWAY



GRANDMA'S

GARDEN

WALKWAY

WALK

PARLOR

BED

ROOM

PORCH

WALKWAY

CLIMBING

ROSES

← THE HOUSE MY PARENTS BUILT AND WHERE I WAS BORN WAS NEXT DOOR TO GRANDMA'S AND GRANDPA'S. WE MOVED FROM THERE IN EARLY 1923.

→ THE ELDER WOIDT FAMILY LIVED ON THIS SIDE.

SIDEWALK

GRASS

601 VIRGINIA AVENUE